

Jin-Soo Kim
(jinsoo.kim@snu.ac.kr)

Systems Software &
Architecture Lab.

Seoul National University

Fall 2021

Performance



CPU Performance

Chap. 1.6, 2.13

Performance Issues

- Measure, analyze, report, and summarize
- Make intelligent choices
- See through the marketing hype
- Key to understanding underlying organizational motivation

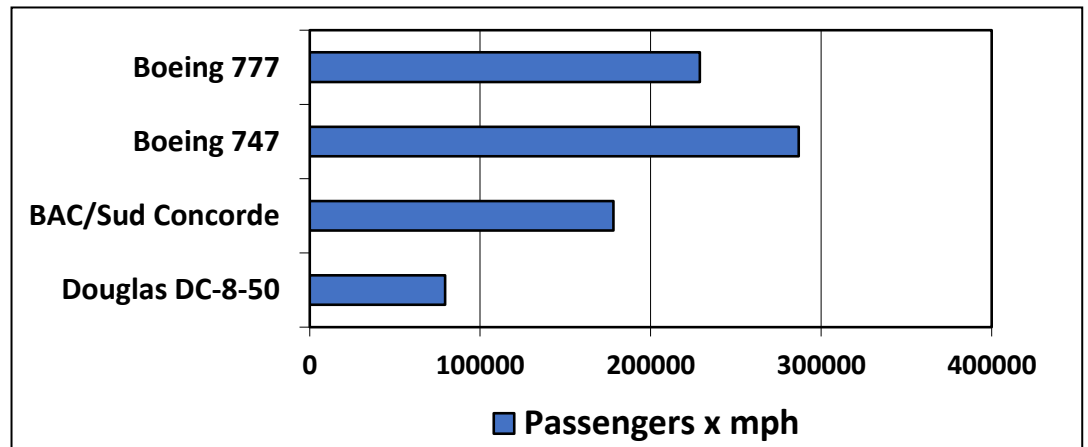
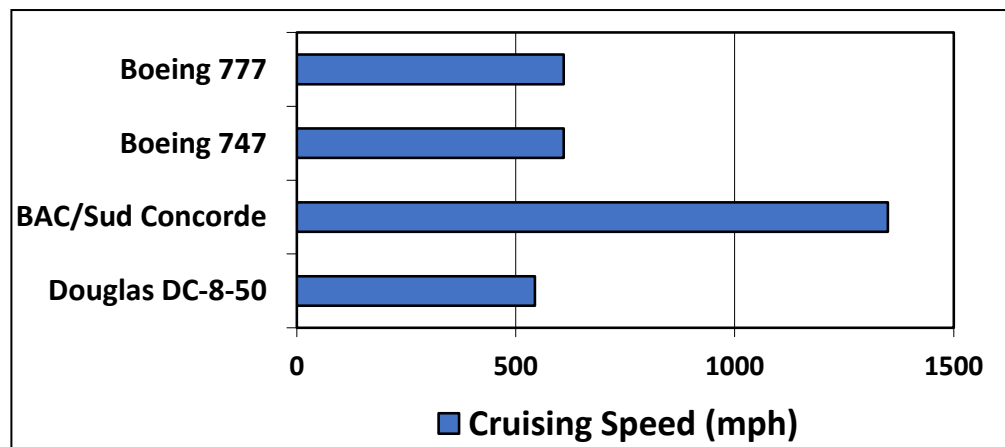
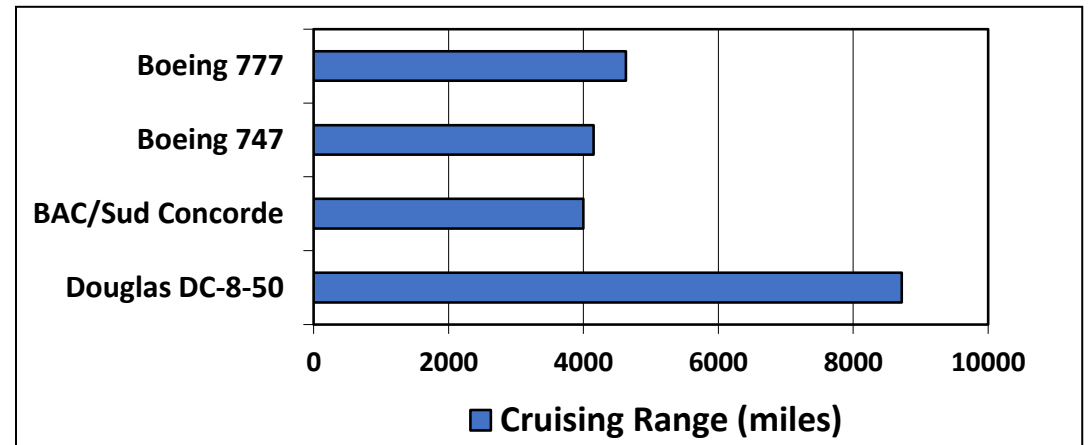
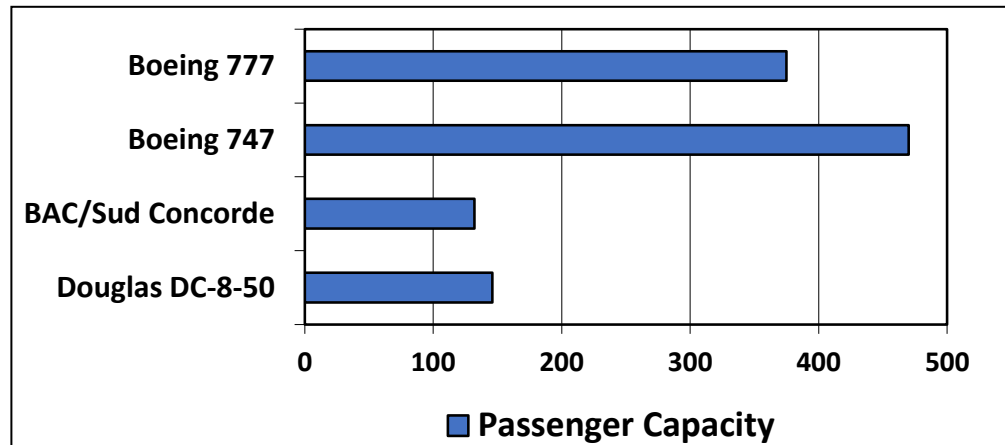
- Questions
 - Why is some hardware better than others for different programs?
 - What factors of system performance are hardware related?
(e.g., Do we need a new machine or a new operating system?)
 - How does the machine's instruction set affect performance?

Understanding Performance

- **Algorithm**
 - Determines number of operations executed
- **Programming language, compiler, architecture**
 - Determine number of machine instructions executed per operation
- **Processor and memory system (microarchitecture)**
 - Determine how fast instructions are executed
- **I/O system (including OS)**
 - Determines how fast I/O operations are executed

Defining Performance

- Which airplane has the best performance?



Performance Metric

- **Response time (\approx execution time, latency)**
 - The time between the start and completion of a task
 - How long does it take for my job to run?
 - How long must I wait for the database query?
- **Throughput (\approx bandwidth)**
 - The total amount of work done in a given time
 - How much work is getting done per unit time?
 - What is the average execution rate?
- **What if ...**
 - We replace the processor with a faster version?
 - We add more processors?

Relative Performance

- Define

$$\textit{Performance} = 1/\textit{Execution Time}$$

- “X is n times faster than Y”

$$\frac{\textit{Performance}_X}{\textit{Performance}_Y} = \frac{\textit{Execution time}_Y}{\textit{Execution time}_X} = n$$

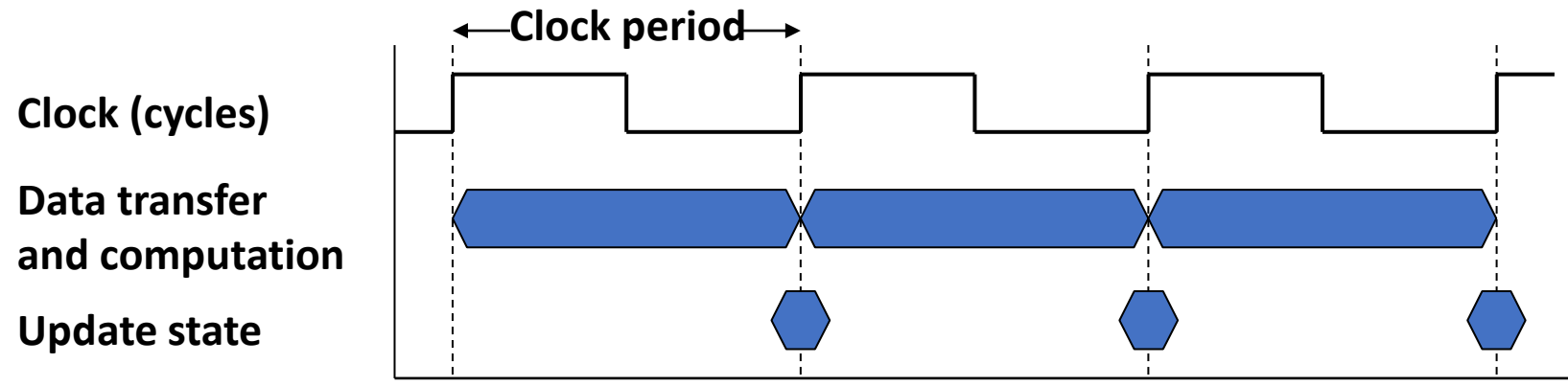
- Example: time taken to run a program
 - 10s on machine A, 15s on machine B
 - $\textit{Execution Time}_B / \textit{Execution Time}_A = 15\text{s} / 10\text{s} = 1.5$
 - Machine A is 1.5 times faster than machine B

Measuring Execution Time

- **Elapsed time**
 - Total response time, including all aspects
 - e.g., processing, I/O, OS overhead, idle time
 - Determines system performance
- **CPU time**
 - Time spent processing a given job
 - Discounts I/O time, other jobs' shares
 - Comprises user CPU time and system CPU time
 - Different programs are affected differently by CPU and system performance
- **Our focus: User CPU time**

CPU Clocking

- Operation of digital hardware governed by a constant-rate clock



- Clock period: duration of a clock cycle
 - e.g., $250\text{ps} = 0.25\text{ns} = 250 \times 10^{-12} \text{ s}$
- Clock frequency (rate): cycles per second
 - e.g., $4.0\text{GHz} = 4000\text{MHz} = 4.0 \times 10^9 \text{ Hz}$

CPU Time

$$\begin{aligned} \text{CPU Time} &= \text{CPU Clock Cycles} \times \text{Clock Cycle Time} \\ &= \frac{\text{CPU Clock Cycles}}{\text{Clock Rate}} \end{aligned}$$

- Performance improved by
 - Reducing number of clock cycles
 - Increasing clock rate (or decreasing the clock cycle time)
 - Hardware designer must often trade off clock rate against cycle count

CPU Time Example

- Computer A: 2GHz clock, 10s CPU time
- Designing Computer B
 - Aim for 6s CPU time
 - Can do faster clock, but causes 1.2x clock cycles
- How fast must Computer B's clock be?

$$\text{Clock Cycles}_A = \text{CPU Time}_A \times \text{Clock Rate}_A = 10s \times 2\text{GHz} = 20 \times 10^9$$

$$\text{Clock Rate}_B = \frac{\text{Clock Cycles}_B}{\text{CPU Time}_B} = \frac{1.2 \times \text{Clock Cycles}_A}{6s} = \frac{1.2 \times 20 \times 10^9}{6s} = 4\text{GHz}$$

Instruction Count and CPU

Clock Cycles = Instruction Count × CPI (Cycles Per Instruction)

CPU Time = Instruction Count × CPI × Clock Cycle Time

$$= \frac{\text{Instruction Count} \times \text{CPI}}{\text{Clock Rate}}$$

- **Instruction count for a program**
 - Determined by program, ISA and compiler
- **Average cycles per instruction**
 - Determined by CPU hardware
 - If different instructions have different CPI, average CPI affected by instruction mix

CPI Example

- Computer A: Cycle time = 250ps, CPI = 2.0
- Computer B: Cycle time = 500ps, CPI = 1.2
- Same ISA
- Which is faster, and by how much?

$$\begin{aligned} \text{CPU Time}_A &= \text{Instruction Count (IC)} \times \text{CPI}_A \times \text{Cycle Time}_A \\ &= \text{IC} \times 2.0 \times 250\text{ps} = \text{IC} \times 500\text{ps} \end{aligned}$$

$$\begin{aligned} \text{CPU Time}_B &= \text{Instruction Count (IC)} \times \text{CPI}_B \times \text{Cycle Time}_B \\ &= \text{IC} \times 1.2 \times 500\text{ps} = \text{IC} \times 600\text{ps} \end{aligned}$$

$$\frac{\text{CPU Time}_B}{\text{CPU Time}_A} = \frac{\text{IC} \times 600\text{ps}}{\text{IC} \times 500\text{ps}} = 1.2$$

A is faster than B by 1.2 times

CPI in More Detail

- If different instruction classes take different numbers of cycles

$$\text{Clock Cycles} = \sum_{i=1}^n (\text{CPI}_i \times \text{Instruction Count}_i)$$

- Weighted average CPI

$$\text{CPI} = \frac{\text{Clock Cycles}}{\text{Instruction Count}} = \sum_{i=1}^n \left(\text{CPI}_i \times \underbrace{\frac{\text{Instruction Count}_i}{\text{Instruction Count}}}_{\text{Relative frequency}} \right)$$

Relative frequency

CPI Example

- Alternative compiled code sequences A and B

| Class | ALU | Load/Store | Branch |
|------------------|-----|------------|--------|
| CPI for class | 1 | 2 | 3 |
| IC in sequence A | 200 | 100 | 200 |
| IC in sequence B | 400 | 100 | 100 |

- Sequence A: IC = 500

- Clock cycles
 $= 200 \times 1 + 100 \times 2 + 200 \times 3$
 $= 1000$
- Average CPI = $1000 / 500 = 2.0$

- Sequence B: IC = 600

- Clock cycles
 $= 400 \times 1 + 100 \times 2 + 100 \times 3$
 $= 900$
- Average CPI = $900 / 600 = 1.5$

C Sort Example (Revisited)

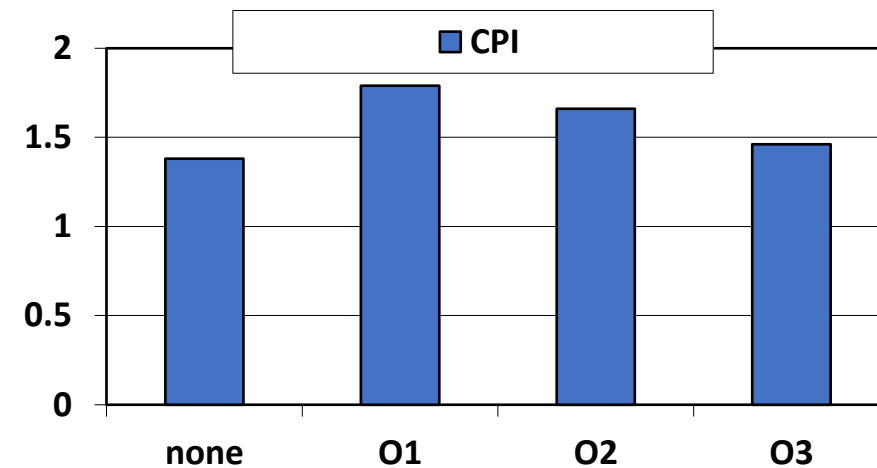
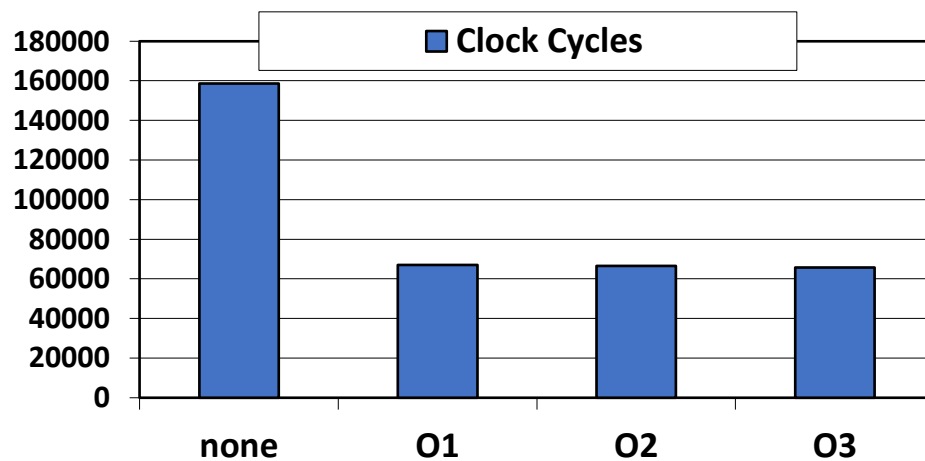
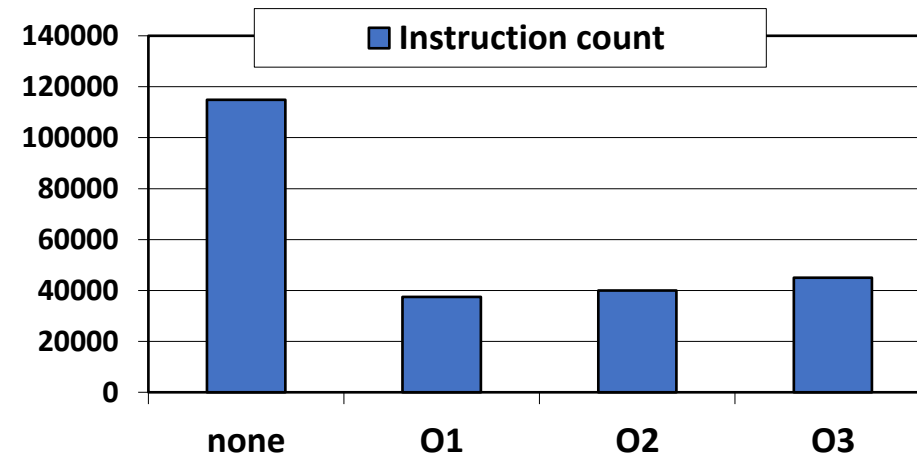
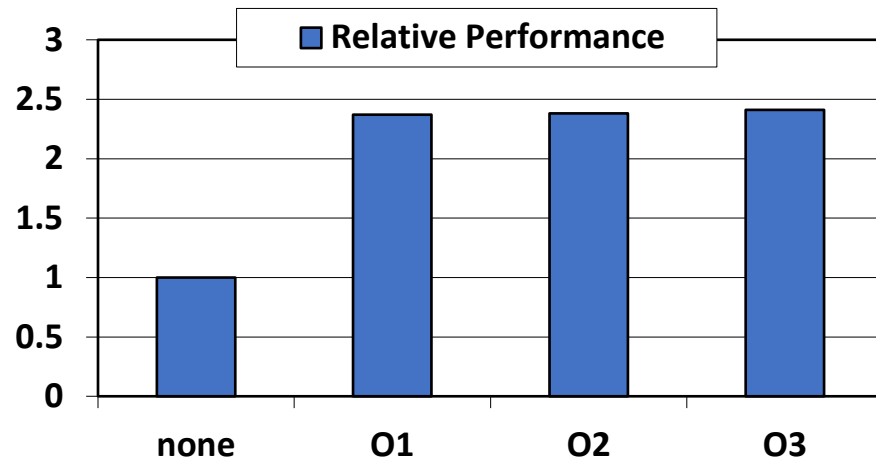
```
void swap(long long v[], long long k)
{
    long long temp;

    temp = v[k];
    v[k] = v[k+1];
    v[k+1] = temp;
}

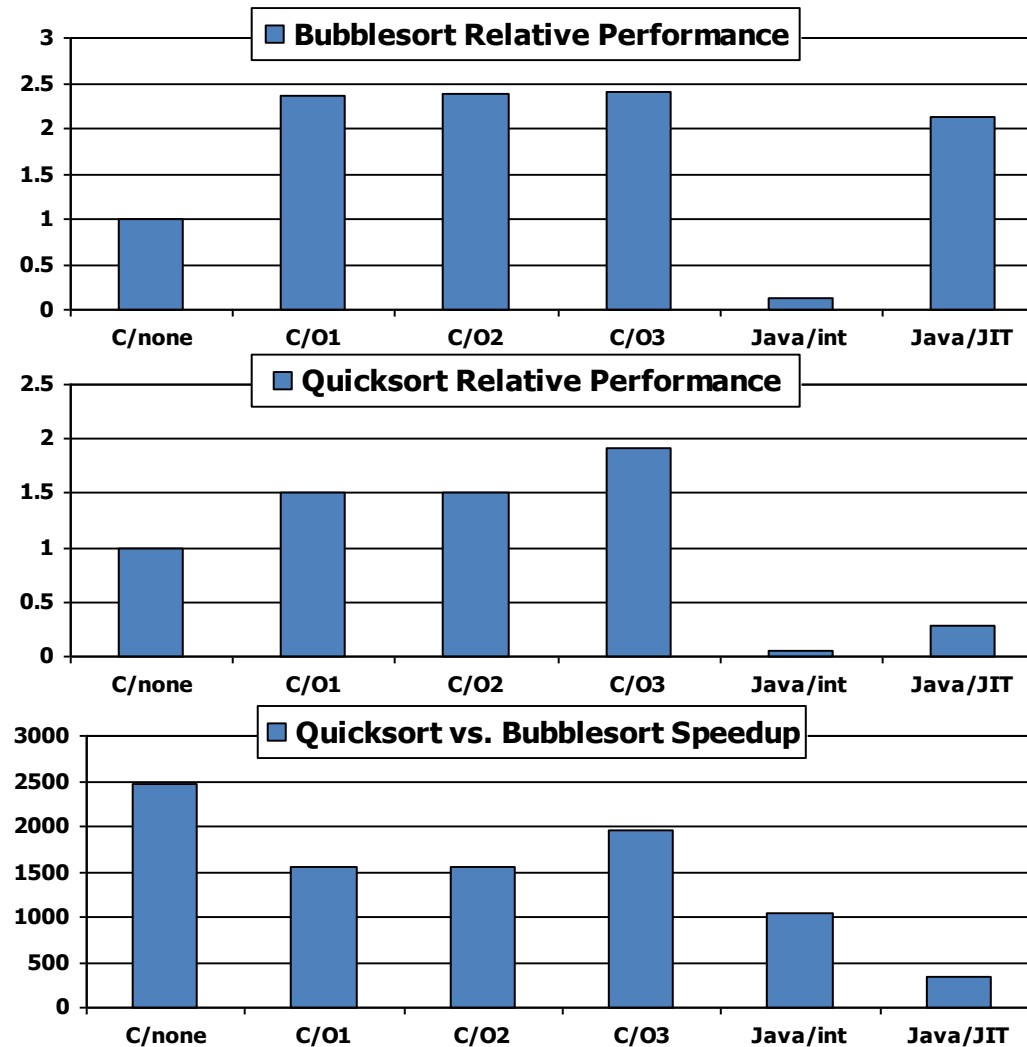
void sort(long long v[], size_t n)
{
    size_t i, j;
    for (i = 1; i < n; i++)
        for (j = i - 1; j >= 0 && v[j] > v[j+1]; j--) {
            swap(v, j);
        }
}
```


Effect of Compiler Optimization

- Compiled with gcc on Pentium 4 under Linux



Effect of Language and Algorithm



Lessons

- Instruction count and CPI are not good performance indicators in isolation
- Compiler optimizations are sensitive to the algorithm
- Java/JIT compiled code is significantly faster than JVM interpreted
 - Comparable to optimized C in some cases
- Nothing can fix a dumb algorithm!

Iron Law of CPU Performance

$$\begin{aligned} \text{CPU Time} &= \frac{\text{Instructions}}{\text{Program}} \times \frac{\text{Cycles}}{\text{Instruction}} \times \frac{\text{Seconds}}{\text{Cycle}} \\ &= \text{Instruction Count} \times \text{CPI} \times \text{Clock Cycle Time} \end{aligned}$$

| | Instruction Count | CPI | Clock Cycle |
|----------------------|-------------------|-----|-------------|
| Algorithm | ○ | △ | |
| Programming language | ○ | ○ | |
| Compiler | ○ | ○ | |
| ISA | ○ | ○ | ○ |
| Microarchitecture | | ○ | ○ |
| Technology | | | ○ |

Fallacy: MIPS as a Performance Metric

- MIPS (Millions of Instructions Per Second) doesn't account for
 - Differences in ISAs between computers
 - Differences in complexity between instructions

$$\begin{aligned} \text{MIPS} &= \frac{\text{Instruction count}}{\text{Execution time} \times 10^6} \\ &= \frac{\text{Instruction count}}{\frac{\text{Instruction count} \times \text{CPI}}{\text{Clock rate}} \times 10^6} = \frac{\text{Clock rate}}{\text{CPI} \times 10^6} \end{aligned}$$

- CPI varies between programs on a given CPU

Benchmarking

Chap. 1.9

Benchmarks

- How to measure the performance?
 - Performance best determined by running a real application
 - Use programs typical of expected workload
- Small benchmarks
 - Nice for architects and designers
 - Easy to standardize
 - Can be abused

SPEC CPU Benchmark

- SPEC (Standard Performance Evaluation Corporation)
 - A non-profit organization that aims to “produce, establish, maintain and endorse a standardized set” of performance benchmarks for computers
 - CPU, Power, HPC (High-Performance Computing), Web servers, Java, Storage, ...
 - <http://www.spec.org>
- SPEC CPU benchmark
 - An industry-standardized, CPU-intensive benchmark suite, stressing a system’s processor, memory subsystem and compiler
 - Companies have agreed on a set of real program and inputs
 - Valuable indicator of performance (and compiler technology)
 - CPU89 → CPU92 → CPU95 → CPU2000 → CPU2006 → CPU2017
 - Can still be abused

Benchmark Games

An embarrassed Intel Corp. acknowledged Friday that a bug in a software program known as a compiler had led the company to overstate the speed of its microprocessor chips on an industry benchmark by 10 percent. However, industry analysts said the coding error...was a sad commentary on a common industry practice of “cheating” on standardized performance tests...The error was pointed out to Intel two days ago by a competitor, Motorola ...came in a test known as SPECint92...Intel acknowledged that it had “optimized” its compiler to improve its test scores. The company had also said that it did not like the practice but felt to compelled to make the optimizations because its competitors were doing the same thing...At the heart of Intel’s problem is the practice of “**tuning**” **compiler programs to recognize certain computing problems in the test and then substituting special handwritten pieces of code...**

Saturday, January 6, 1996 New York Times

SPEC CPU2006

- Elapsed time to execute a selection of programs
 - Negligible I/O, so focuses on CPU performance
- Normalize relative to reference machine
 - Sun's historical "Ultra Enterprise 2" introduced in 1997
 - 296MHz UltraSPARC II processor
- Summarize as geometric mean of performance ratios
 - CINT2006: 12 integer programs written in C and C++
 - CFP2006: 17 FP programs written in Fortran and C/C++

$$\sqrt[n]{\prod_{i=1}^n \text{Execution time ratio } i}$$

SPEC CPU2006 Suites

| Integer Benchmarks (CINT2006) | | | Floating Point Benchmarks (CFP2006) | | |
|-------------------------------|-----|--------------------------------|-------------------------------------|-----------|-----------------------------------|
| perlbench | C | Perl programming language | bwaves | Fortran | Fluid dynamics |
| bzip2 | C | Compression | gamess | Fortran | Quantum chemistry |
| gcc | C | C compiler | milc | C | Physics: Quantum chromodynamics |
| mcf | C | Combinatorial optimization | zeusmp | Fortran | Physics / CFD |
| gobmk | C | Artificial intelligence: Go | gromacs | C/Fortran | Biochemistry / Molecular dynamics |
| hmmer | C | Search gene sequence | cactusADM | C/Fortran | Physics / General relativity |
| sjeng | C | Artificial intelligence: Chess | leslie3d | Fortran | Fluid dynamics |
| libquantum | C | Physics: Quantum computing | namd | C++ | Biology / Molecular dynamics |
| h264ref | C | Video compression | deall | C++ | Finite element analysis |
| omnetpp | C++ | Discrete event simulation | soplex | C++ | Linear programming, optimization |
| astar | C++ | Path-finding algorithms | povray | C++ | Image ray-tracing |
| xalancbmk | C++ | XML processing | calculix | C/Fortran | Structural mechanics |
| | | | GemsFDTD | Fortran | Computational electromagnetics |
| | | | tonto | Fortran | Quantum chemistry |
| | | | lbm | C | Fluid dynamics |
| | | | wrf | C/Fortran | Weather prediction |
| | | | sphinx3 | C | Speech recognition |

CINT2006 for Intel Core i7 920

| Description | Name | Instruction Count x 10 ⁹ | CPI | Clock cycle time (seconds x 10 ⁻⁹) | Execution Time (seconds) | Reference Time (seconds) | SPECratio |
|-----------------------------------|------------|-------------------------------------|------|--|--------------------------|--------------------------|-----------|
| Interpreted string processing | perl | 2252 | 0.60 | 0.376 | 508 | 9770 | 19.2 |
| Block-sorting compression | bzip2 | 2390 | 0.70 | 0.376 | 629 | 9650 | 15.4 |
| GNU C compiler | gcc | 794 | 1.20 | 0.376 | 358 | 8050 | 22.5 |
| Combinatorial optimization | mcf | 221 | 2.66 | 0.376 | 221 | 9120 | 41.2 |
| Go game (AI) | go | 1274 | 1.10 | 0.376 | 527 | 10490 | 19.9 |
| Search gene sequence | hmmer | 2616 | 0.60 | 0.376 | 590 | 9330 | 15.8 |
| Chess game (AI) | sjeng | 1948 | 0.80 | 0.376 | 586 | 12100 | 20.7 |
| Quantum computer simulation | libquantum | 659 | 0.44 | 0.376 | 109 | 20720 | 190.0 |
| Video compression | h264avc | 3793 | 0.50 | 0.376 | 713 | 22130 | 31.0 |
| Discrete event simulation library | omnetpp | 367 | 2.10 | 0.376 | 290 | 6250 | 21.5 |
| Games/path finding | astar | 1250 | 1.00 | 0.376 | 470 | 7020 | 14.9 |
| XML parsing | xalancbmk | 1045 | 0.70 | 0.376 | 275 | 6900 | 25.1 |
| Geometric mean | - | - | - | - | - | - | 25.7 |

Summary

- Performance is specific to a particular program(s)
 - Total execution time is a consistent summary of the performance
- For a given architecture, performance increases come from
 - Increases in clock rate (without adverse CPI effects)
 - Improvements in processor organization that lower CPI
 - Compiler enhancements that lower CPI and/or instruction count
 - Algorithm/language choices that affect instruction count
- Pitfall: Using a subset of the performance equation as a performance metric